



Martin Finnin  
*An Uncouth Song*



*Nothing to do With Permanent*, 2021  
oil on canvas, 50 x 60 cms, 19½ x 23½ inches

Martin Finnin  
*An Uncouth Song*

3–27 June 2021

*An Uncouth Song* brings together a group of paintings which evolved over eighteen months in Martin Finnin's Cork studio, and then in a lockdown shed in his garden.

John Martin Gallery



*To Dismiss the Frost*, 2020  
oil on canvas, 120 x 150 cms, 47 x 59 inches

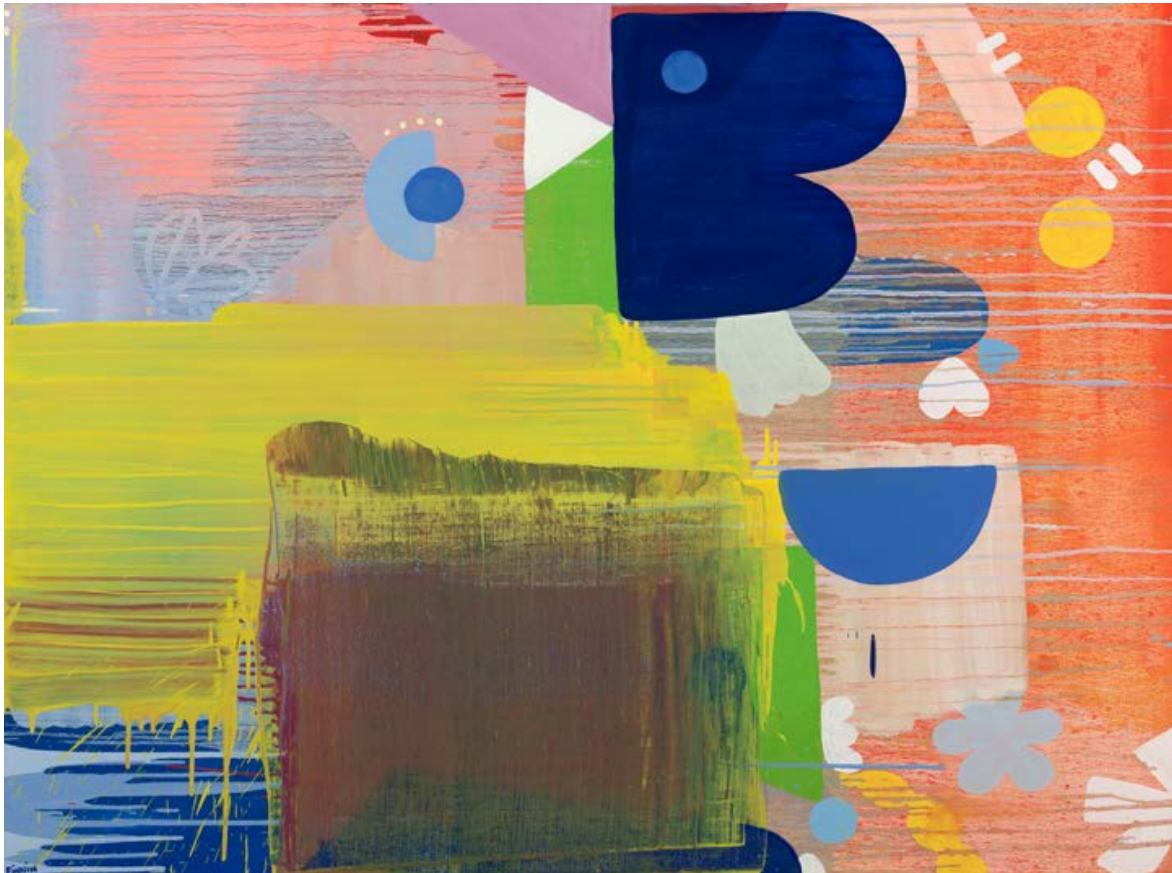






*The Wounded Deer Leaps the Highest*, 2020  
oil on canvas, 120 x 180 cms, 47 x 71 inches





*Hunting in a River of Colour*, 2020  
oil on canvas, 120 x 150 cms, 47 x 59 inches





*“Pink is a colour that humms through the new work. It entered the paintings from a cherry blossom tree that was outside my lockdown studio window.”*



*A Room with a Dream*, 2020  
oil on canvas, 150 x 180 cms, 59 x 71 inches





*Another Trick of Nature*, 2020  
oil on canvas, 100 x 80 cms, 40 x 31½ inches





*Dockyard, Early Morning Mist*, 2020  
oil on canvas, 100 x 80 cms, 40 x 31 inches



*Circles on Their Way to Breakfast, 2020*  
oil on canvas, 100 x 80 cms, 40 x 31½ inches





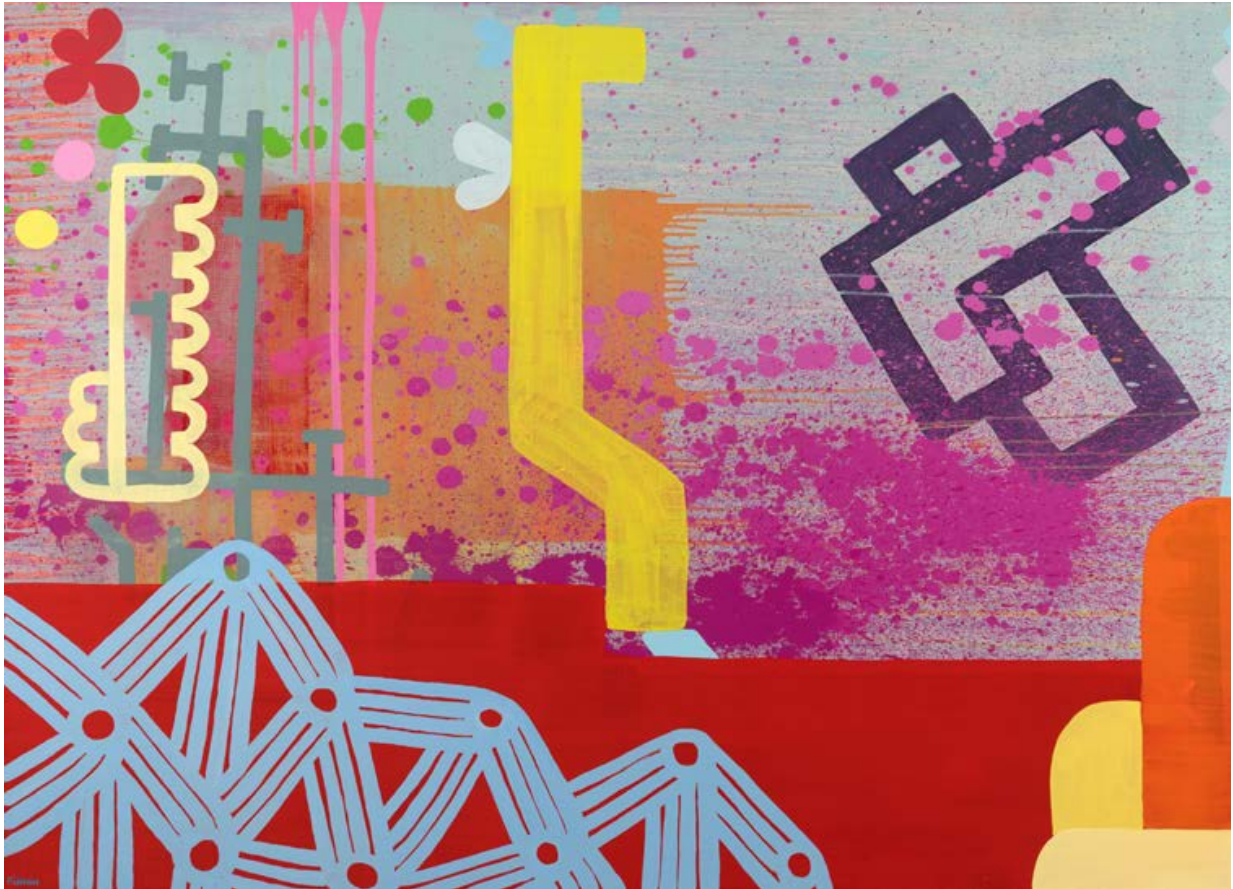




*Gripped by Pluto's Left Hand*, 2020 (detail)  
oil on canvas, 120 x 180 cms, 47 x 71 inches





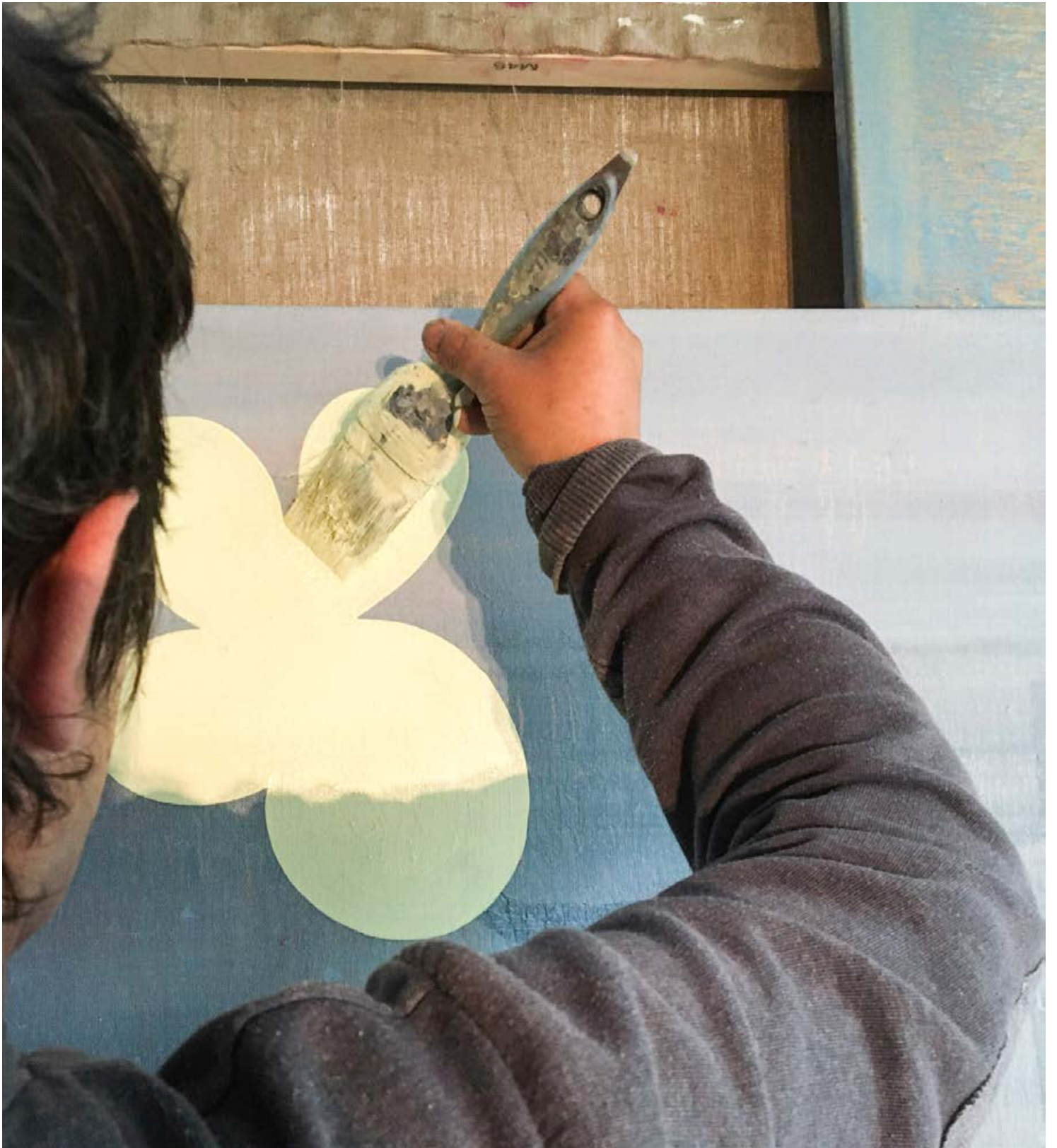


*Two Dolphins Laughing at an Uncouth Song*, 2020  
oil on canvas, 150 x 180 cms, 59 x 71 inches





*You'd Have to Buy Another Dawn*, 2020  
oil on canvas, 100 x 120 cms, 40 x 47 inches







*Acrobats and Flowers*, 2020  
oil on canvas, 150 x 120 cms, 59 x 47 inches



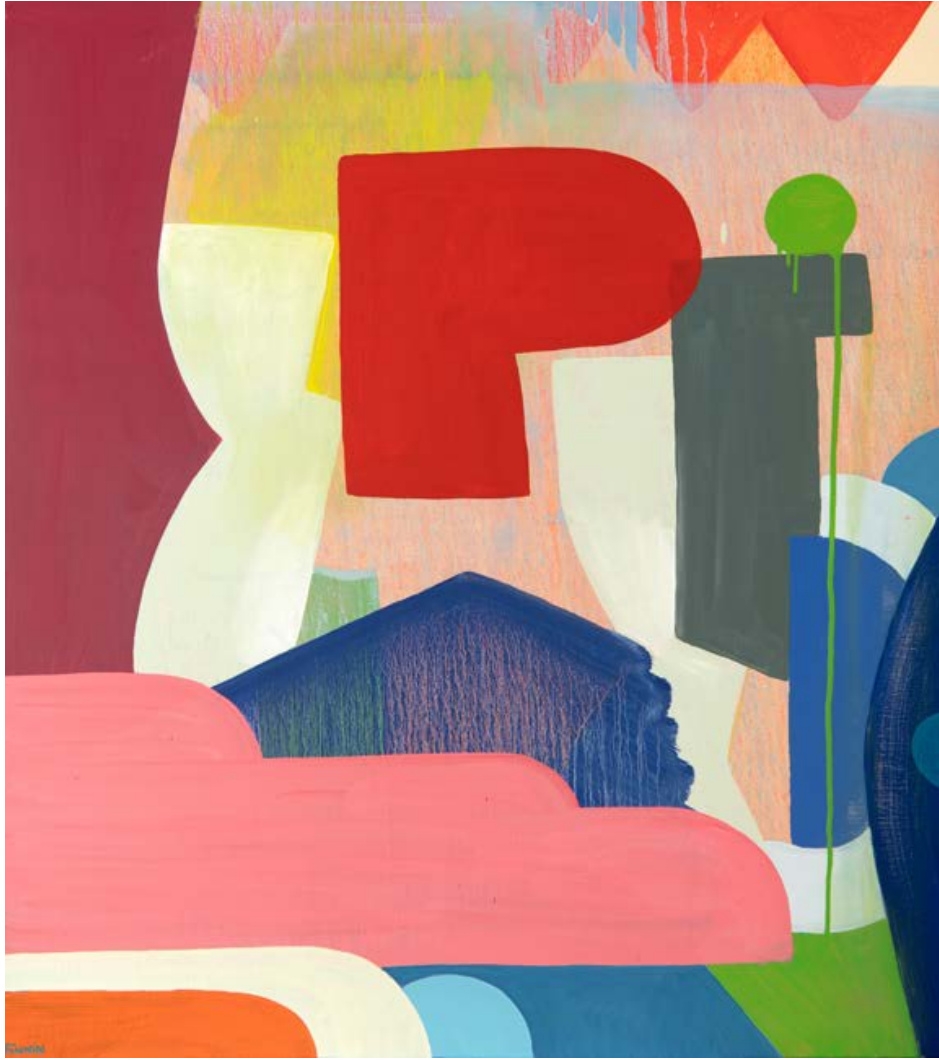
*Skinny Dipping in Eternity*, 2021  
oil on canvas, 77 x 100 cms, 30 x 40 inches







*A Thousand and One Nighttime's*, 2020  
oil on canvas, 120 x 180 cms, 47 x 71 inches



*Stalking Joy on Open Ground*, 2020  
oil on canvas, 120 x 100 cms, 47 x 40 inches







*“The shed at the back of the house means I can work early in the morning, go to the studio in town and work there until the afternoon and usually do a few more hours at night out the back again when I get home...it’s a really good flow that has come from something unusual.”*



*The Living Poet in her Harness*, 2020  
oil on canvas, 100 x 120 cms, 40 x 47 inches





*Sold Apples in the Rain*, 2021  
oil on canvas, 50 x 76 cms, 19½ x 30 inches





*It Couldn't Be That*, 2020  
oil on canvas, 50 x 60 cms, 19½ x 23½ inches



*Night in the Land*, 2021  
on canvas, 120 x 180 cms, 47 x 71 inches







*Dockyard with Moving Parts*, 2021  
oil on canvas, 120 x 100 cms, 47 x 40 inches



Published by John Martin Gallery  
for the exhibition 'An Uncouth Song' by Martin Finnin  
3 – 27 June 2021 at John Martin Gallery  
First Floor, 38 Albemarle Street, London W1S 4JG  
Tel +44 (0)20 7499 1314  
Enquiries Tara Whelan  
[www.jmlondon.com](http://www.jmlondon.com)

All paintings © Martin Finnin  
Catalogue by PUSH, London.  
All rights reserved. Except for purposes of review, no part of this book  
may be reproduced, stored in a retrieval system, or transmitted by any  
means without prior permission of the publisher.

ISBN 978-1-9993013-8-5